

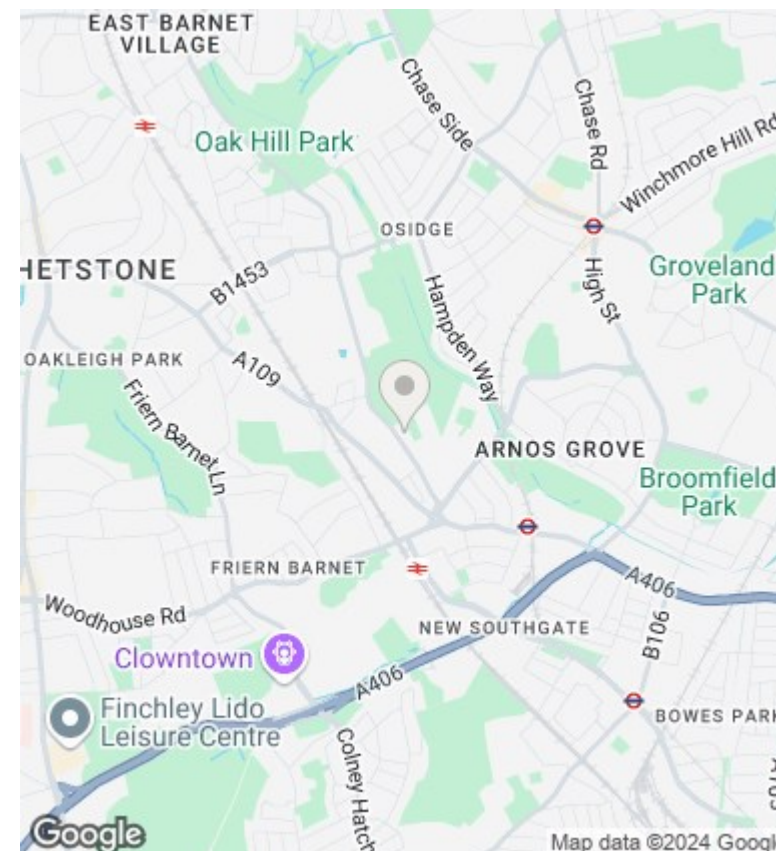
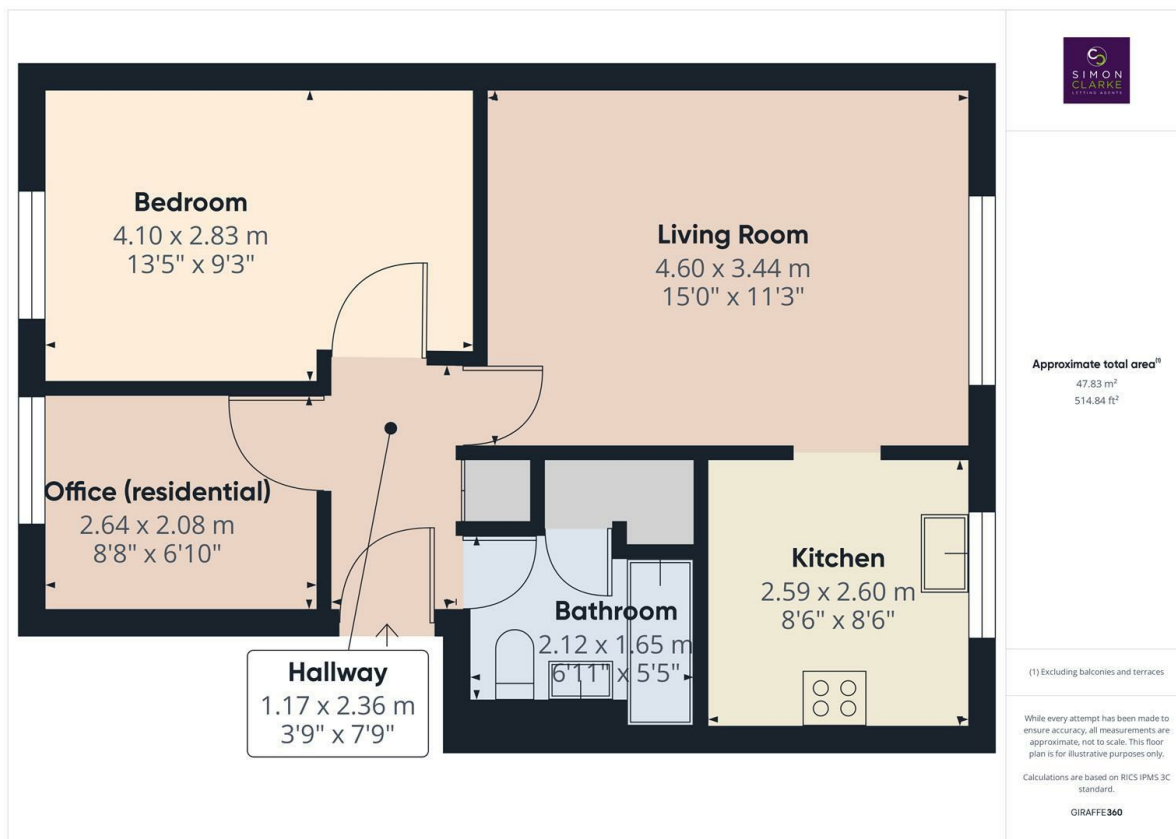


## Darwin Close, London, N11 1TA

£1,500 PCM

- 2 Bedroom top floor flat (2nd floor)
- Ample storage space including access to loft
- Available on long term tenancy (initial 12 months)
- Stylish modern fitted kitchen
- Available Now
- Council Tax band C - £1,727.32 per annum

- Off street parking
- 0.5 Miles to New Southgate & 0.6 Miles to Arnos Grove
- Unfurnished



## Directions

## Viewings

Viewings by arrangement only. Call 02083499000 to make an appointment.

## Council Tax Band

C

## EPC Rating:

C

Energy Efficiency Rating		
	Current	Potential
Very energy efficient - lower running costs		
(92 plus) <b>A</b>		
(81-91) <b>B</b>	77	79
(69-80) <b>C</b>		
(55-68) <b>D</b>		
(39-54) <b>E</b>		
(21-38) <b>F</b>		
(1-20) <b>G</b>		
Not energy efficient - higher running costs		
<b>England &amp; Wales</b>	EU Directive 2002/91/EC	